

The evolving classroom response system at Kansas State University: Classtalk, PRS, & PDAs.

Dean Zollman & N. Sanjay Rebello

Physics Education Research Group
Kansas State University

Supported by



Hewlett Packard
Technology for
Teaching Grant



Office of the
Provost, Kansas
State University

Physics Education Research Group
Kansas State University

Response System in Physics at KSU: The Last 10 Years

- Primarily in introductory courses
- Variety of class sizes
 - 15 to 180 students
- Mostly for in-class feedback on conceptual understanding
 - Essentially no testing with systems
- Some (not all) faculty provide credit for use
- About ½ faculty have used system at least once

Physics Education Research Group
Kansas State University

Classtalk (1995 – 2000) Hardware

- Designed & Built by Better Education Inc.
 - <http://www.bedu.com/>
- Hard wired proprietary network
- Macintosh Server
- Hewlett-Packard Hand-held *DOS* computers
 - Full QWERTY keyboard

Physics Education Research Group
Kansas State University

Classtalk Software

Designed & Written by Fred Hartline

- Mac server
 - Sends questions to handhelds
 - All types of questions possible
 - *Not* limited to multiple choice
 - Provides analysis & individual responses for instructor
 - Could send different messages to handhelds depending on the student's response
- Handhelds
 - Full questions appear on screen
 - Alphabetic & numeric responses possible

Physics Education Research Group
Kansas State University

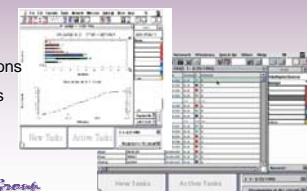
Classtalk Software

Includes seating chart with ability to click on a seat and see the student's name, picture and response.



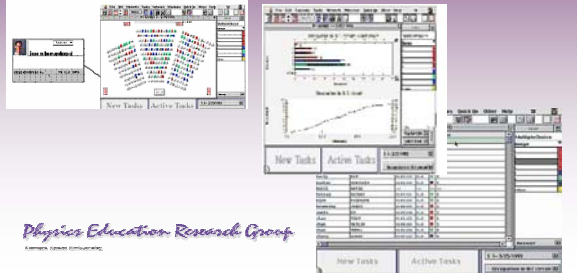
Analyses include

- Parsing for short answer questions
- Binning for numerical responses
- Histograms for multiple choice



Physics Education Research Group
Kansas State University

Better than any software for later systems



Assessment of Student Learning*

- Completed in conceptual physics course for elementary education majors
- Three classes
 - Before Classtalk was installed
 - Classtalk installed about mid semester
 - Used Classtalk entire class
- Common final exam
- Attitude surveys
- Results show positive effects in both learning & attitudes

Physics Education Research Group
Aurora, Idaho 83403

*David Johnson: unpublished MS Thesis

Personal Response System (PRS) 2001 Onwards

- Infrared (wireless)
- Remote clickers
- One way communication
 - No “server” just a receiver
- Multiple choice only
- Relatively inexpensive
- Many other similar systems

Physics Education Research Group
Aurora, Idaho 83403

PRS

Q 1	02:00	0
Aaron 1110	Fred 1122	Bill 1108
Eric 1144	Diem 1125	
Louis 1115	Darcy 1199	

Legend: High (Green), Med. (Red), Low (Black)

Physics Education Research Group
Aurora, Idaho 83403

Personal Data Assistants (PDA) 2004 Onwards

- Wireless Internet
- Full “keyboard” available
 - No limits on types of responses
- Web-based software
 - Can run in browser
 - Not all functions of desktop browsers
 - Any Web-based question-response system can work
- Expensive ~\$500-600 (Cheaper models available)
 - Thanks

Physics Education Research Group
Aurora, Idaho 83403

“I love using these hand-held computers. I really like how it provides feedback directly to the teacher. I plan on getting one of these, for my own personal use.”

“The best thing about the hand-held computers is that they provide useful feedback to the instructor about whether or not we understand”

“They are really easy to use and with the questions and response method it is easy to participate in class. It seems to really show the weak areas of the class to the professor.”

Physics Education Research Group
Aurora, Idaho 83403

Different Questions with Graphical response

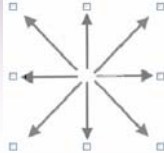
- Each student sees a picture of a diver after she has left the board
- Three students sitting next to each other will have different pictures
 - On the way up
 - At the peak
 - On the way down
- They select vectors to indicate each force acting on the diver.
- Subsequent peer-to-peer discussion addresses the "force in the direction of motion" issue.

Physics Education Research Group
University of Kansas

What are directions of the forces acting on the diver at this position?
 Consider all forces individually, not the net force.



Select as many different directions as needed to describe all of the forces. Then tap the SUBMIT button.



Issues

- Internet Explorer on PDAs is limited
 - Only one window open at a time
 - Java not implemented well
 - Macromedia Flash is but we have not used it yet
- Installing new software is done one machine at a time
- During class students will
 - Read e-mail
 - Play games
 - Check bank accounts

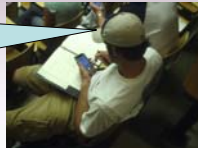
Physics Education Research Group
University of Kansas

And they can check up on the instructor



I fixed the problem with the online grade book.

No, you didn't. I am looking at it right now.



Physics Education Research Group
University of Kansas

For more information

http://web.phys.ksu.edu/HP_project

Physics Education Research Group
University of Kansas