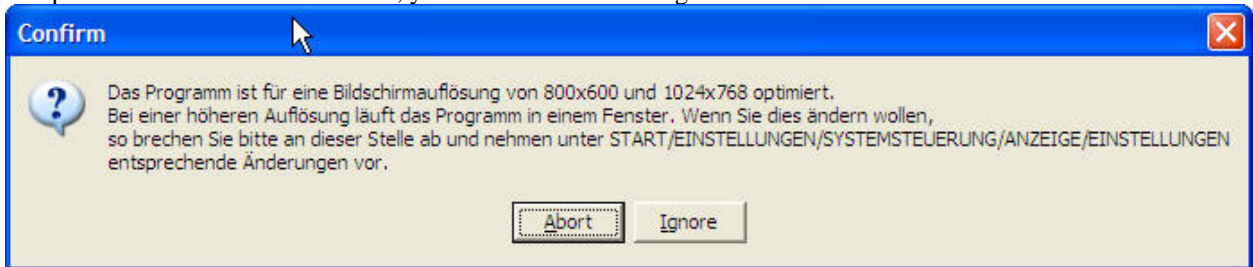


CTSim Translation Notes

When I discovered CTSim at Ludwig Maximilian University in Munich, the source code was not available. Thus, I needed to use other means to obtain a version which could be used by English speaking students. I used a localization program which read the executable code and enabled me to translate most, but not quite all, of the information which appeared on the screen. Below I discuss the issues which might arise when you use the English version.

The program was written for resolutions of 800x600 or 1024x768. If you start the program when your computer is in some other resolution, you will see the following screen.



Sorry, I was unable to convert this message to English.

The program will not run properly if you click Ignore. You need to enter the Control Panel, click Display, then the Settings tab. Then set the screen resolution to either 800x600 or 1024x768. Start the program again and you will not see this screen.

If you need to have your screen at a higher resolution, the following trick will work. Set the Display to one of the two resolutions listed above. Start CTSim. Reset the resolution to the desired value. The program will work.

Within the program there are a few things that could not be translated or changed.

A few subscripts are not in the correct place for the English version. For some reason, they refused to be moved.

The “Korrektur” button refused to be translated. It appears on two screens and should be “Check.”

In the Library used on the simulation on the last page, the words in the tabs are also used as variables in the program. Changing them caused the Library to malfunction. Wirbelsäule = spine; Herz = heart; Gehirn = brain

Also on the last page using the adjustments will cause some of the descriptions of the settings along the bottom of the screen to change from English to German. I don't know why.

Under Lexicon, most of the items under “Real Computer Tomography” are still in German.

While these “features” will be annoying, I think that you will find CTSim sufficiently useful that the value will overcome the irritations.

Dean Zollman
Munich,
Spring 2007